

CERTIFICATE OF LOCATION OF GOVERNMENT CORNER

Northeast _____ Corner of Section 6 , Township 108 , Range 39 , 5th P.M.

STATE OF MINNESOTA, County of Murray

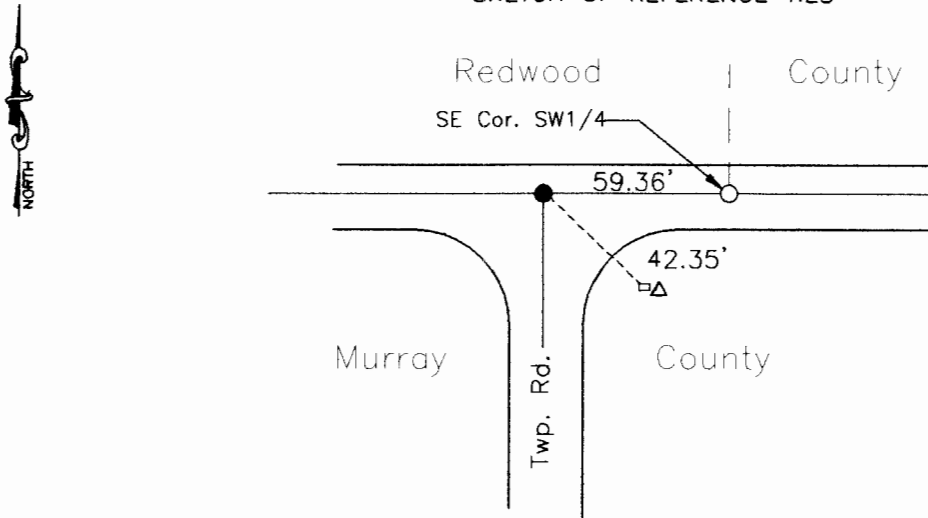
At the corner location shown on the sketch:

On _____ found a _____
DATE

left monument as found, lowered monument, removed monument (explain)

On Nov. 17, 1998 placed a 1" iron pipe with seal #11943
DATE

SKETCH OF REFERENCE TIES



Nail and seal in top of gaurd post next to pedestal 42.35' SE
SE cor. SW1/4 Sec. 32-109-39 59.36' E

Statement of evidence relative to this corner location is on back of page.

I hereby certify that this document and the data contained herein was prepared by me or under my direct supervision.

Lyle C Moseny 11-19-98
SIGNATURE DATE
Registration No. 11943

- Land Surveyor, Professional Engineer
- County Surveyor, County Engineer

OFFICE OF THE COUNTY RECORDER

County of _____

I hereby certify that this document was filed in the Co. Recorders office at _____ .M on the _____ day of _____ A.D. 19 _____

County Recorder _____

By _____, Deputy

DOCUMENT NO. _____

Statement of Evidence

On May 13, 1899, J.W. Woolstercraft place a stone at the corner.

On November 4, 1998, Moseng land surveying dug with backhoe from G.H. Plumbing of Tracy, MN. The hole was 4' X 8' and down to clay, we found nothing. We place a 5/8" iron with seal #11943. On line with the SE Cor. SW1/4 Section 32-109-39 and the SW Cor. SW1/4 of Section 32-109-39.